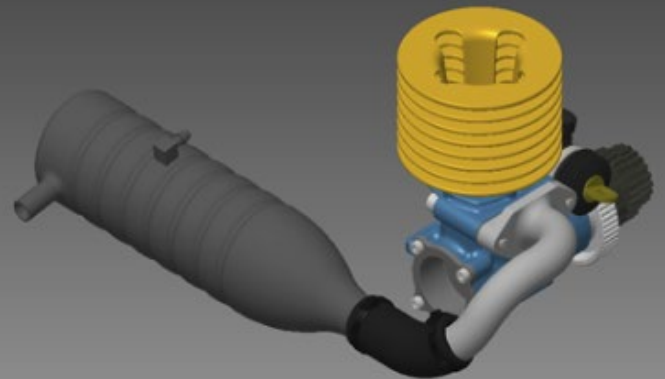
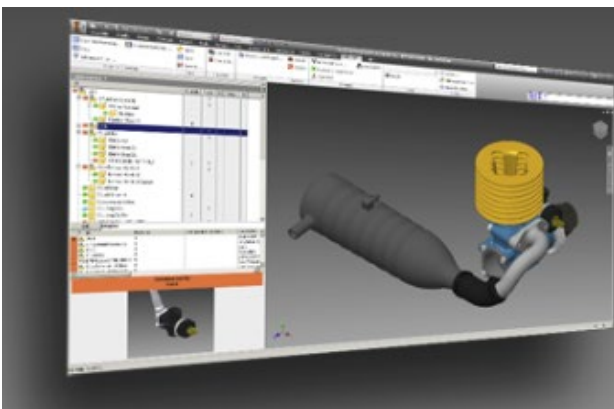
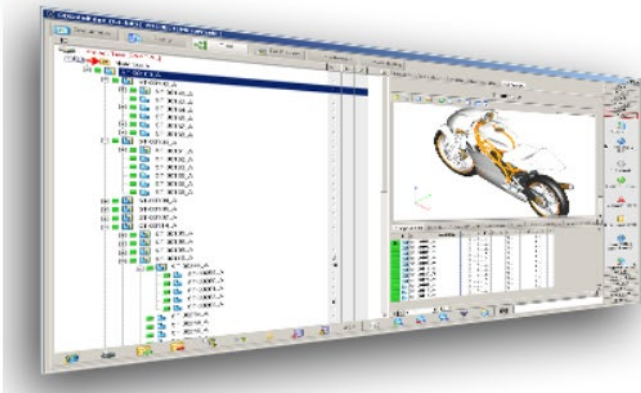


MechWorks PDM MWAutoNumber Release Notes Version 2.0.0

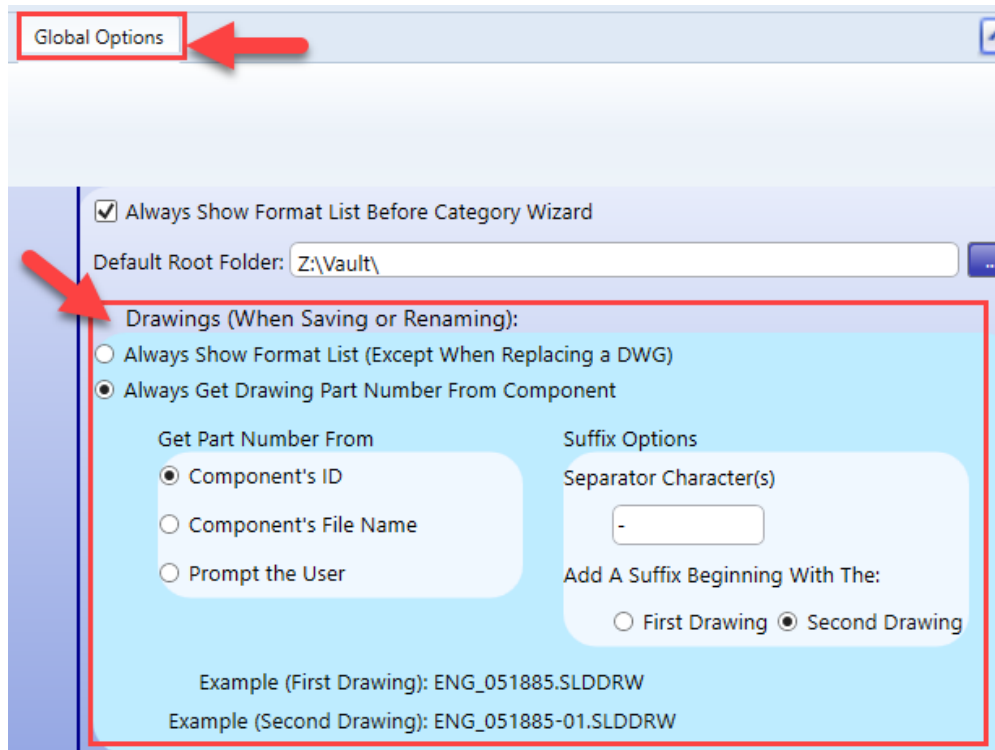


MWAutoNumber Release Notes

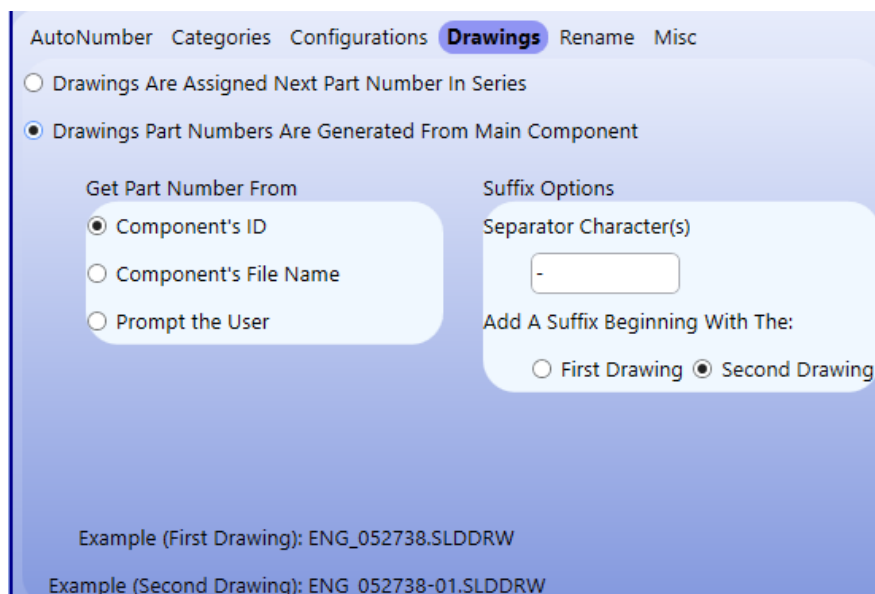
2.0.0

Enhancements (2.0.0)

- There are new Drawings options in the **Global Options** tab:

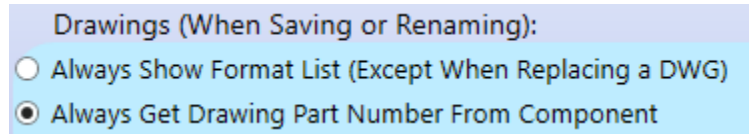


In addition, the **Drawings** options for each format have been updated similarly:



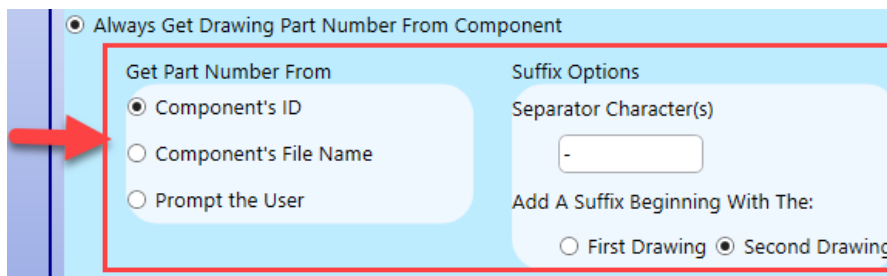
MWAutoNumber Release Notes

[GLOBAL DRAWING OPTIONS]



If the Global Option “Always Show Format List When Saving a Drawing (Except When Replacing a DWG)” is activated, then the format list is always displayed when *registering* or *renaming* a drawing, and the part number assigned to the drawing will depend on the selected format’s options. (The exception is when the model was saved using a “Replace DWG” type format. In this case, the user will be prompted to replace the DWG instead.) On the other hand, if the Global Option “Always Get Drawing Part Number From Component” is activated, then the format list is *never* displayed when *registering* or *renaming* a drawing (of a model), as the primary model’s value is used to automatically generate the drawing’s part number.

If the Global Option “Always Get Drawing Part Number From Component” is activated, then several sub options will be available:

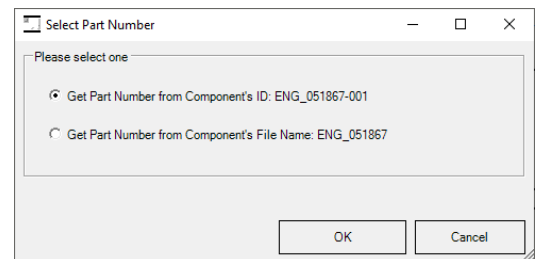


The first option, “Get Part Number From”, controls whether the drawing’s part number is driven from the component’s ID or File Name. This option can be especially useful if the MechWorks PDM environment is saving configurations as distinct records. For example, if the following part file exists with three configurations:

- ENG_051867.SLDPRT
 - ENG_051867-001
 - ENG_051867-002
 - ENG_051867-003

If the user creates a drawing of ENG_051867-001, the setting of this option will control if the drawing is named ENG_051867-001.SLDDRW (“Get Part Number From -> Component’s ID”) or ENG_051867.SLDDRW (“Get Part Number From -> Component’s File Name”).

If “Get Part Number From -> Prompt the User” is selected, then the user will be prompted with the choice when they save the drawing:



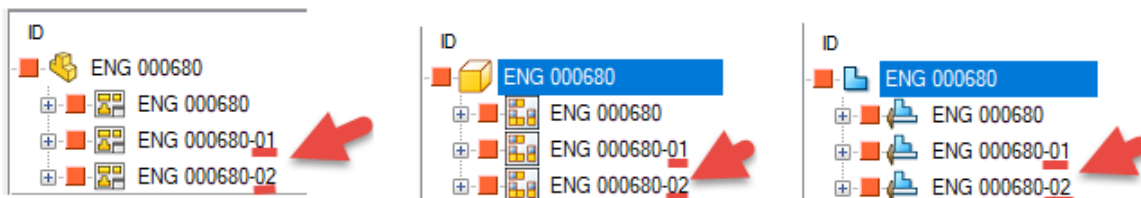
MWAutoNumber Release Notes

Although the “Get Part Number From” option might be most useful in environments saving configurations as distinct records, it could also be useful in environments using a custom post-script to control the ID and File Name slightly differently from each other.

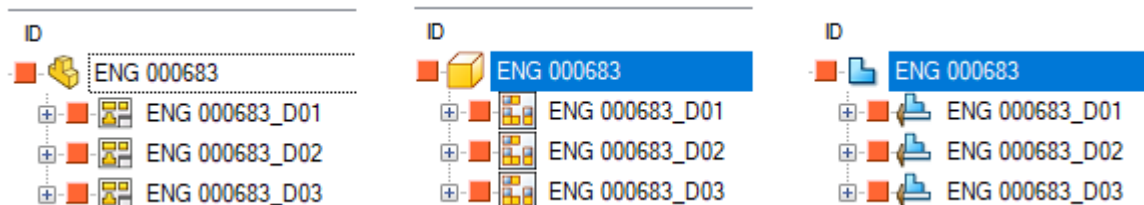
The second set of options, “Suffix Options”, controls the suffix in the Drawing’s file name, especially in the case of multiple Drawings.

The “Separator Character(s)” option controls the character or characters separating the main Drawing’s part number with the Drawing’s suffix (which is always a 2-digit counter). The “Add a Suffix Beginning With The:” option controls if the suffix is added beginning with the first Drawing or the second Drawing.

For example, if the “Suffix Character(s)” option is set to “-”, and the “Add a Suffix Beginning With The:” option is set to “Second Drawing”, then Drawing part numbers would be assigned something like this:



On the other hand, if the “Suffix Character(s)” option is set to “_D”, and the “Add a Suffix Beginning With The:” option is set to “First Drawing”, then Drawing part numbers will be assigned something like this:



Drawings (When Saving or Renaming):

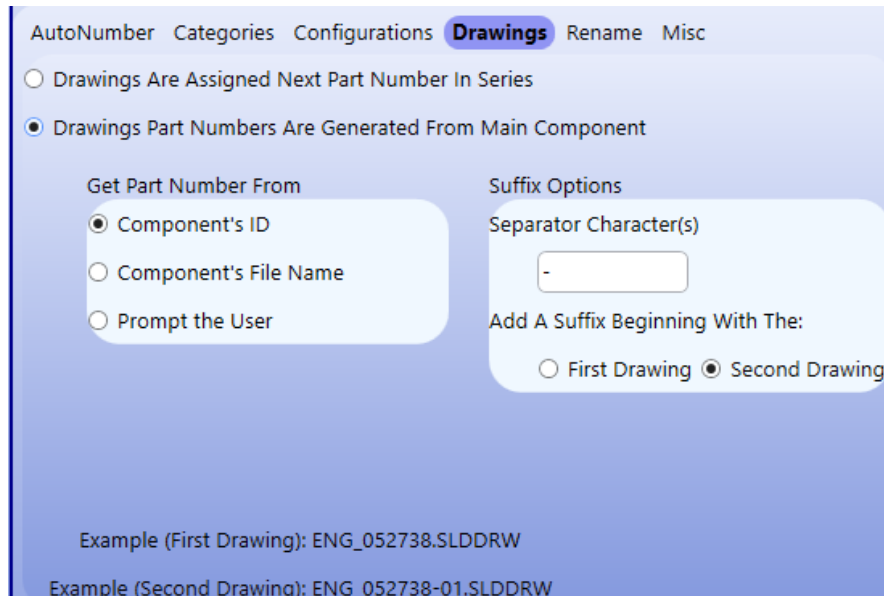
- Always Show Format List (Except When Replacing a DWG)
- Always Get Drawing Part Number From Component

If the Global Option “Always Show Format List When Saving A Drawing (Except When Replacing a DWG)” is activated, then the [Format List] will always be displayed when registering or renaming a drawing, and the drawing’s part number and suffix will be controlled by the selected Format’s [Drawings] options (see next page).

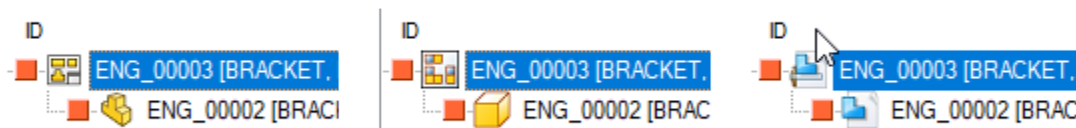
MWAutoNumber Release Notes

[Format Specific Drawing Options]

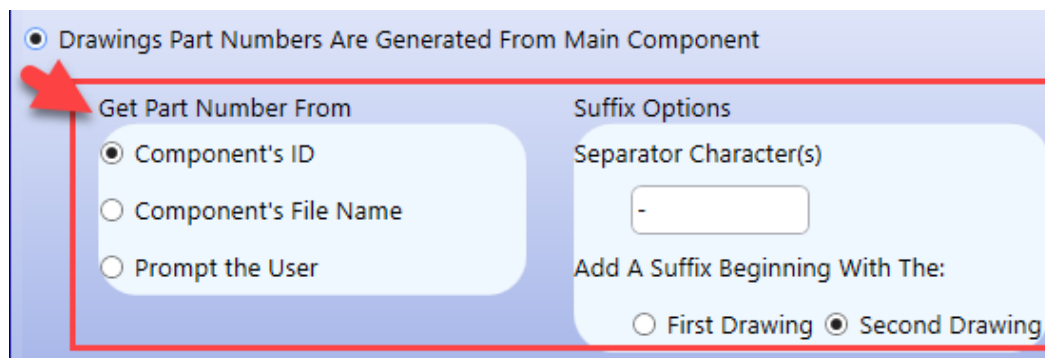
If the Global Option “Always Show Format List When Saving A Drawing” is activated, then each Format will have a [Drawings] tab, which allows for additional controls for the Drawing’s part number (differently for each Format):



If the “Drawings Are Assigned Next Part Number In Series” option is activated, then the Drawings will get the next part number in the Format’s series. For example, the following figures represent the results from the appropriate CAD application:



On the other hand, If the Format Option “Drawing Part Numbers Are Generated From Main Component” is activated, then several sub options will be available:



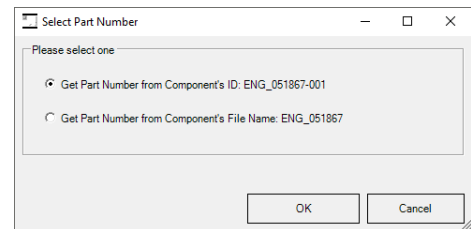
MWAutoNumber Release Notes

The first option, “Get Part Number From”, controls whether the Drawing’s part number is driven from the component’s ID vs. its File Name. This option can be especially useful if MechWorks PDM is configured to save configurations as distinct records. For example, if the following part file exists with three managed configuration records:

- ENG_051867.SLDPRT
 - ENG_051867-001
 - ENG_051867-002

If the user creates a Drawing of ENG_051867-001, the setting of this option will control if the Drawing is named ENG_051867-001.SLDDRW (“Get Part Number From -> Component’s ID”) or ENG_051867.SLDDRW (“Get Part Number From -> Component’s File Name”).

If “Get Part Number From -> Prompt the User” is selected, then the user will be prompted with the choice when they save the Drawing:

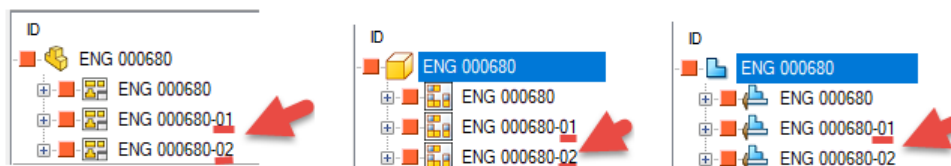


Although the “Get Part Number From” option might be most useful within environments saving configurations as distinct records, it could also be useful within environments using a custom post-script to control the ID and File Name slightly differently from each other.

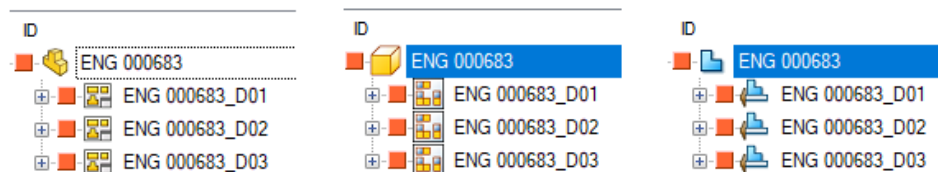
The second set of options, “Suffix Options”, controls the suffix within the Drawing’s ID and File Name, especially in the case of multiple Drawings.

The “Separator Character(s)” option controls the character or characters separating the main Drawing’s part number with the Drawing’s suffix (which is always a 2-digit counter). The “Add a Suffix Beginning With The:” option controls if the suffix is added beginning with the first Drawing or the second Drawing.

For example, if the “Suffix Character(s)” option is set to “-”, and the “Add a Suffix Beginning With The” option is set to “Second Drawing”, then Drawings part numbers would be assigned something like this:



On the other hand, if the “Suffix Character(s)” option is set to “_D”, and the “Add a Suffix Beginning With The” option is set to “First Drawing”, then Drawings part numbers would be assigned something like this:



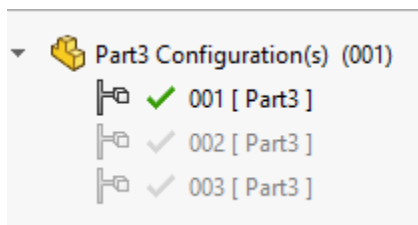
MWAutoNumber Release Notes

- The [Configurations] tab has been enhanced to include more options:

The screenshot shows the 'Configurations' tab in a software interface. It has a navigation bar with 'AutoNumber', 'Categories', 'Configurations' (highlighted), 'Drawings', 'Rename', and 'Misc'. The main area is divided into two sections: 'ID (Within Database Record)' and 'Configuration Name (Within File)'. In the 'ID' section, there are two radio buttons: 'Unique ID (Next AutoNumber)' and 'ID from File Name and Configuration Name' (which is selected). Below these is a 'Preview: PartNumber-ConfigName' label, a 'Prefix' text box containing a hyphen, and a 'Suffix' text box. At the bottom of this section is a checkbox labeled 'Default Configuration Assigned Just Part Number'. The 'Configuration Name' section has two radio buttons: 'Rename to Match ID' (selected) and 'Do Not Rename'.

On the left side, the Administrator can control how the “ID (Within the Database Record)” is controlled. On the right side, the Administrator can control (*separately now*), if the “Configuration Name (Within the File)” is renamed to match the ID in the database.

For example, if there is a model with three configurations:



If the “ID (Within Database Record -> Unique ID (Next AutoNumber))” option is activated, each configuration will be assigned the next part number in the Format’s series:

A table with four columns: 'T', 'Id', 'Revision', and 'File_name'. A red arrow points to the 'Id' column. The table contains three rows of data, each with a gear icon in the 'T' column.

T	Id	Revision	File_name
ENG_051870	00	ENG_051870.SLDPRT	
ENG_051871	00	ENG_051870.SLDPRT	
ENG_051872	00	ENG_051870.SLDPRT	

MWAutoNumber Release Notes

If the “Configuration Name (Within File) -> Rename to Match ID” option is selected, the name of each managed configurations within the file will be updated to match its assigned ID from the database:

T	Id	Revision	File_name	Configuration
	ENG_051870	00	ENG_051870.SLDPRT	ENG_051870
	ENG_051871	00	ENG_051870.SLDPRT	ENG_051871
	ENG_051872	00	ENG_051870.SLDPRT	ENG_051872

On the other hand, if the “Configuration Name (Within File) -> Do Not Rename” option is activated, then the managed configurations within the file will not be renamed to match their ID value:

T	Id	Revision	File_name	Configuration
	ENG_051870	00	ENG_051870.SLDPRT	001
	ENG_051871	00	ENG_051870.SLDPRT	002
	ENG_051872	00	ENG_051870.SLDPRT	003

Alternatively, if the “ID (Within Database Record) -> ID from File Name and Configuration Name” option is activated, then the main part number will be assigned to the File Name, and each managed configuration will get an ID based on the combination of the assigned part number and their original configuration name:

T	Id	Revision	File_name
	ENG_051870-001	00	ENG_051870.SLDPRT
	ENG_051870-002	00	ENG_051870.SLDPRT
	ENG_051870-003	00	ENG_051870.SLDPRT

If the “Configuration Name (Within File) -> Rename to Match ID” option is activated, the name of the managed configurations within the file will be updated to match the new ID:

T	Id	Revision	File_name	Configuration
	ENG_051870-001	00	ENG_051870.SLDPRT	ENG_051870-001
	ENG_051870-002	00	ENG_051870.SLDPRT	ENG_051870-002
	ENG_051870-003	00	ENG_051870.SLDPRT	ENG_051870-003

MWAutoNumber Release Notes

On the other hand, if the “Configuration Name (Within File) -> Do Not Rename” option is activated, then the managed configurations within the file will not be renamed:

T	Id	Revision	File_name	Configuration
	ENG_051870-001	00	ENG_051870.SLDPRT	001
	ENG_051870-002	00	ENG_051870.SLDPRT	002
	ENG_051870-003	00	ENG_051870.SLDPRT	003

The option “Default Configuration Assigned Just Part Number” controls whether or not the “Default” configuration is assigned the main part number directly, or the main part number appended with the configuration (like the other configurations).

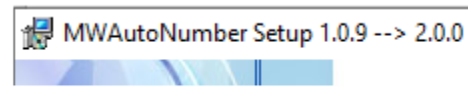
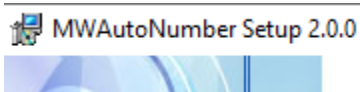
“Default Configuration Assigned Just Part Number” Disabled

T	Id	Revision	File_name	Configuration
	ENG_051872-001	00	ENG_051872.SLDPRT	001
	ENG_051872-002	00	ENG_051872.SLDPRT	002
	ENG_051872-Default	00	ENG_051872.SLDPRT	Default

“Default Configuration Assigned Just Part Number” Enabled

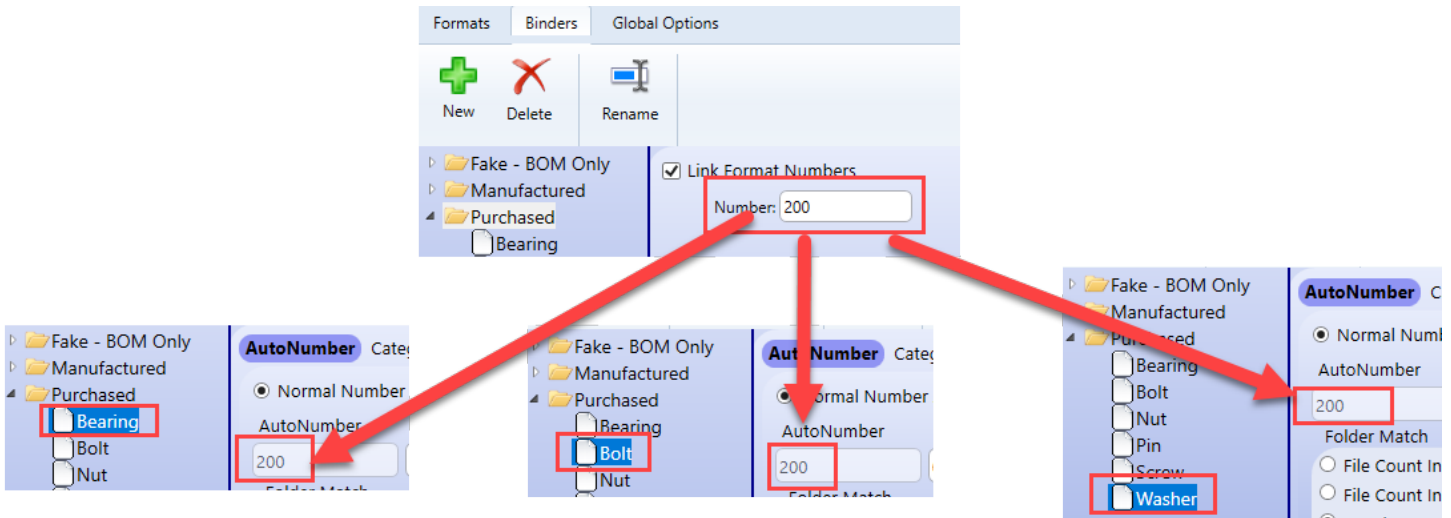
T	Id	File_name	Configuration
	ENG_051871	ENG_051871.SLDPRT	Default
	ENG_051871-001	ENG_051871.SLDPRT	001
	ENG_051871-002	ENG_051871.SLDPRT	002

- When selecting the “**Client + Server**” version during the installation process, the installer now validates that the user can create tables/fields within the database and files within the noted LST folder. If not, the user is presented with a message letting them know that they do not have sufficient permissions to install the “**Client + Server**” version.
- The installer now shows the version about to be installed in the title of all the dialogs. Also, if a previous version is already installed, it displays that information as well.

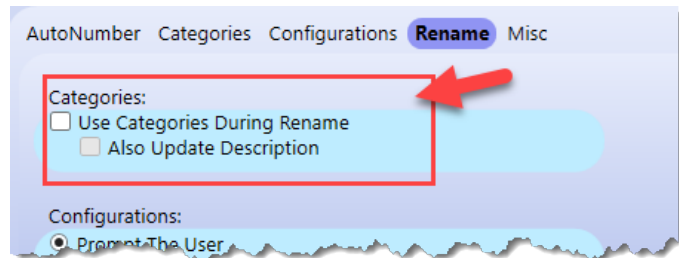


MWAutoNumber Release Notes

- When using the “Link Format Numbers” binder option, the number for all the Binders’ defined formats are now controlled at the binder level:



- The **Rename** tab now has two new options:

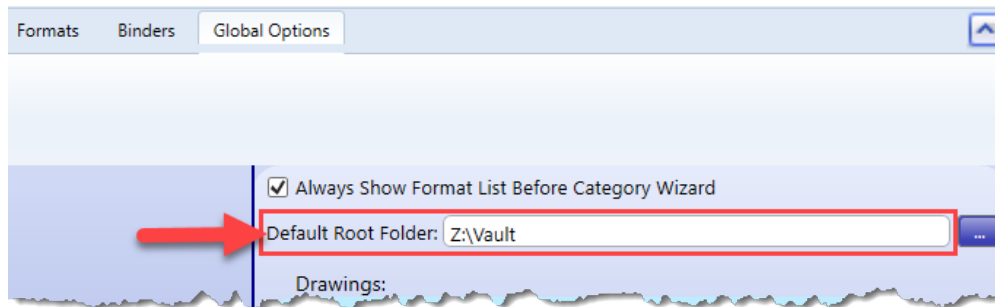


If the “Use Categories During Rename” option is enabled, then the Category Wizard will be displayed during a Rename event. This allows the administrator to control separately if the Category Wizard is displayed during a Rename event vs. the initial Save-As/registration event. The “Use Categories” option on the AutoNumber tab now only controls if the Category Wizard is displayed during the initial Save-As/registration event.

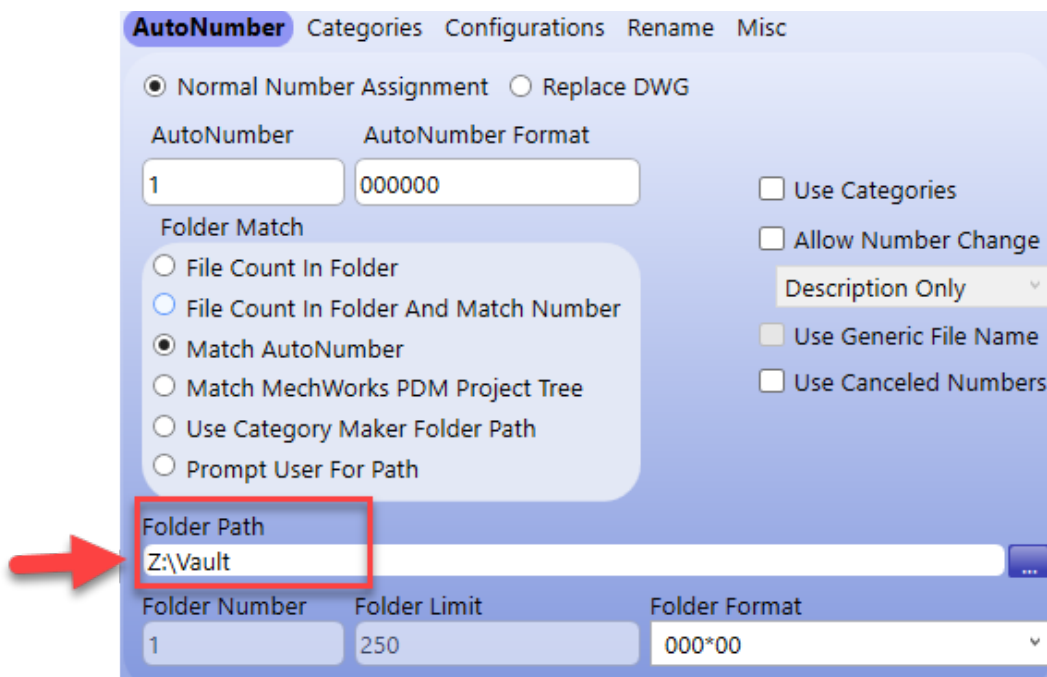
Additionally, if the sub option “Also Update Description” is enabled, then the record’s DESCRIPTION will be overwritten with the new categories after a rename event. This option is useful for environments which drive the record’s DESCRIPTION from the selected categories.

MWAutoNumber Release Notes

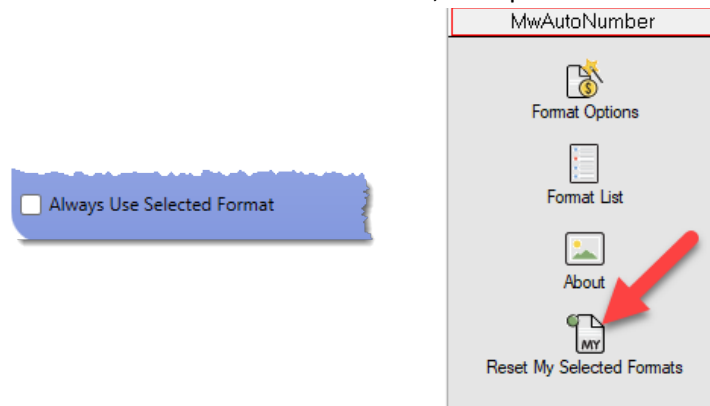
- There is a new Global Option: “Default Root Folder”:



This option controls what the initial “Folder Path” will default to when creating a new format:

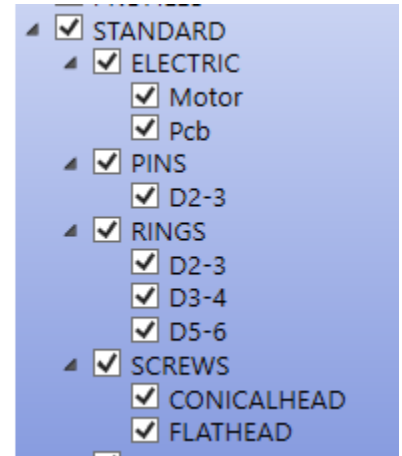
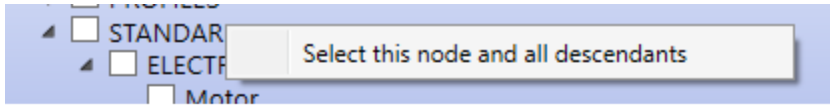


- Previously, when using the “Always Use Selected Format” option, the user had to restart MechWorks PDM in order to reset the option and select a different format. Now, the option can be cleared using a new short-cut:

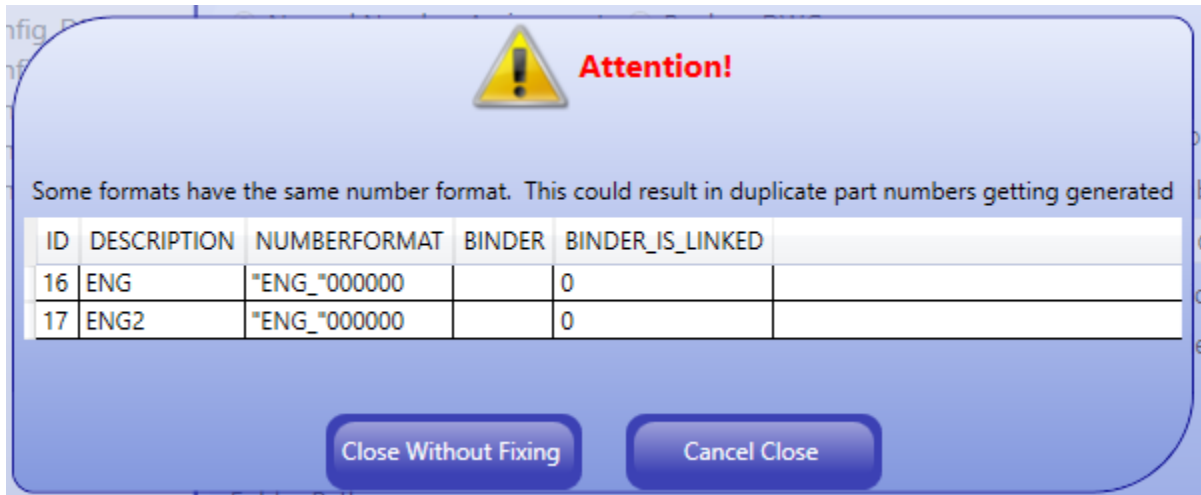


MWAutoNumber Release Notes

- In the [Categories] tab, it is now possible to right mouse select an upper-level category and select a menu option to select this node and all descendants:

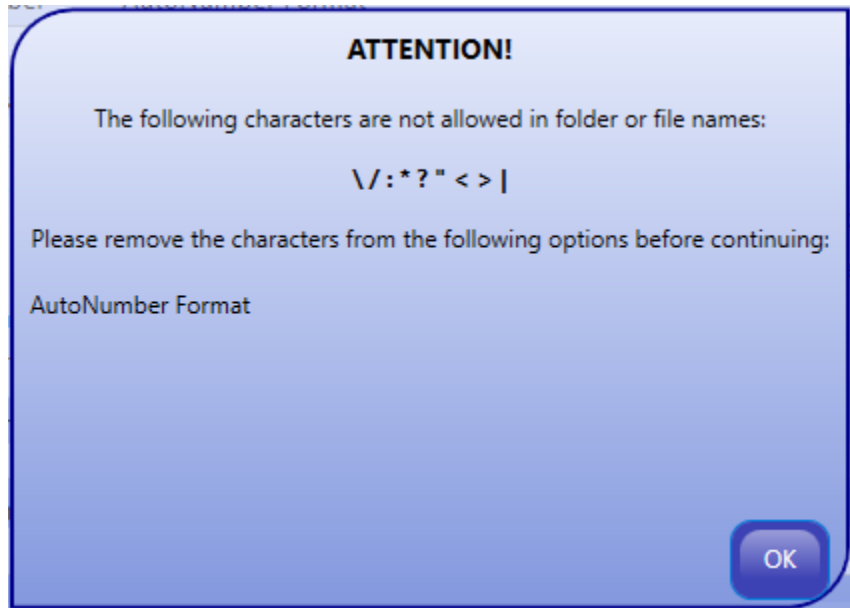


- Before closing, the [Format Options] dialog checks to see if there are any formats with the same “AutoNumber Format” setting. Two formats with the same “AutoNumber Format” setting is usually undesired, as it could result in duplicate IDs getting generated. (The exception to this rule is formats in the same Binder, with the Binder linking the format number.) If any two formats are found with the same setting, the user is warned and allowed to return to the main screen to resolve the issue before closing:



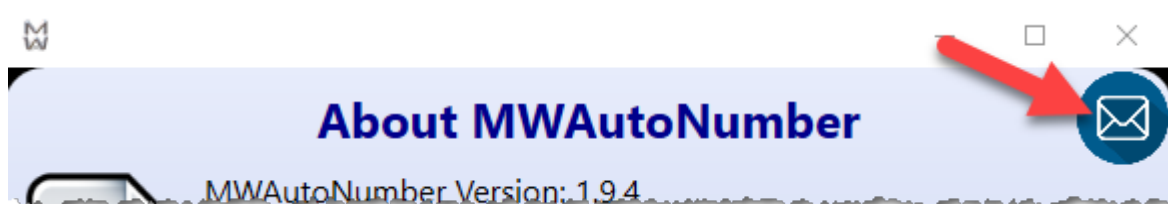
MWAutoNumber Release Notes

- The [Format Options] dialog now checks the “AutoNumber Format”, “Folder Path” and “Folder Format” options for characters incompatible with Windows folder or file names. For example, the “?” character is not allowed in Windows folder or file names. If a user tries to add the “?” character to any of the mentioned options, the [Format Dialog] will show an error explaining the issue and forcing the user to fix it before the format can be saved:

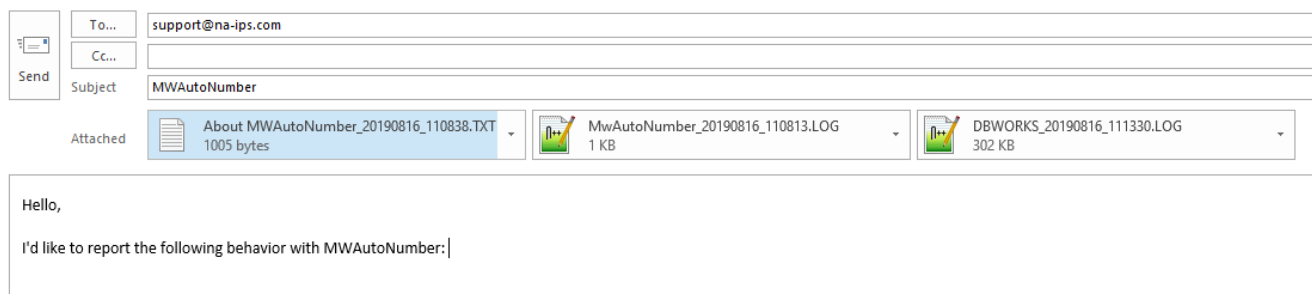


MWAutoNumber Release Notes

- The [About MWAutoNumber] dialog now has an [Email] button in the upper right corner:



If the user selects this button, an email to IPS Support will be automatically generated in Outlook. The email will automatically include two attachments: one being a text file capturing the current version and configuration of MWAutoNumber, the other being the MWAutoNumber log capturing all recent MWAutoNumber behavior. Additionally, if MechWorks PDM logging is enabled, the MechWorks PDM log will be attached as well:



This functionality can be extremely helpful when tracking down and reporting unexpected behavior with MWAutoNumber. If unexpected behavior with MWAutoNumber is experienced, the steps to take should be as follows:

1. Immediately after the unexpected behavior, launch the [About MWAutoNumber] dialog and select its [Email] button to generate the email.
2. Within the body of the email, explain the unexpected behavior with as much detail as possible.
3. Send the email to IPS Support (support@na-ips.com).

MWAutoNumber Release Notes

Bug Fixes (2.0.0)

- Bug Fix: When selecting a format to replace a DWG, it was allowed to select a format already used by a part (if saving an assembly) or an assembly (if saving a part).
- When checking for formats with the same AutoNumber Format and AutoNumber settings, the dialog was returning "Replace a DWG" type formats even though there are no AutoNumber Format and AutoNumber settings for this type of format.
- When selecting a format to "Replace a DWG", the search was returning DWGs checked out to other users and foreign owned DWGs.
- When selecting a format to "Replace a DWG" - if two DWGS could be returned by the search, only one was shown.
- When using the Assembly Duplication Wizard to duplicate a configured file, the format option to assign the "ID from File Name and Configuration Name" was ignored (instead just assigning the File Name as the ID).
- When renaming a document with configurations and selecting the option to "Replace Part Number in ID for ALL Configurations", no confirmation box was shown.
- The warning that a configuration was about to be renamed to an unmanaged name was shown, even when selecting a format with the option selected to not rename the configuration.
- When using Linked Categories and showing the [Format List] first, if the format was using the option to "Use Category Maker Folder Path", then the folder was not output correctly.
- In February 2019, a necessary parameter was added to an API call in the DataEntr.LIB file. MWAutoNumber was not compatible with this parameter until this release.
- When trying to rename an empty drawing, an error was displayed saying the user must rename from the component. Renaming an empty drawing is now allowed.
- When trying to rename a drawing in an environment not using Link Mode, an error was displayed saying the user must rename from the component. Renaming a drawing directly is now allowed in environments not using Link Mode.
- The [Formats] ⇔ (AutoNumber) ⇔ "Use Generic File Name" option was not working correctly
- When selecting a format using the [Formats] ⇔ (Configurations) ⇔ "Do Not Categorize Brother Configurations" option, sometimes an error about the UBound of the array was displayed and the DataEntr.LST script would crash.
- When renaming, if a format with the [Formats] ⇔ (AutoNumber) ⇔ "Allow Description Change" option was active, the user was prompted to change the Description, but the description was not updated.
- When using the [Formats] ⇔ (AutoNumber) ⇔ Folder Match ⇔ "Prompt User For Path" option (from Inventor and/or Solid Edge), the wrong file extension was displayed within the dialog.
- Tables were not always installed with the DBO schema assignment.
- The [Binders] ⇔ "Link Format Number" option was not working correctly.

MWAutoNumber Release Notes

- When executing a SaveAs against a Drawing and being prompted for a format, if the selected format had the [Formats] ⇔ (AutoNumber) ⇔ "Use Categories" option activated; then the script would sometimes exit early and not save the drawing.
- The DataEntr.LST script was not working correctly when attempting to use the [Creating a New Drawing BOM Item] menu selection from within MechWorks PDM. It typically resulted in the error: "No document in the drawing : must give name manually" message.
- The displayed text of the example file/path name was sometimes truncated in the format list and in the format properties. The displayed text is now wrapped so it is no longer truncated.
- The wrong file extension was sometimes displayed within the example file name of the format list.
- When using the [Formats] ⇔ (AutoNumber) ⇔ "Replace DWG" format type, the 3D CAD model now always starts with the revision from the source DWG file (that is being replaced).
- When re-selecting a format defined within the options dialog, the "changes made" asterisk would sometimes appear as active even if changes were not made.
- When selecting "Cancel Changes" within the format options dialog, changes to the "Linked Categories" were not properly removed.
- When copying an existing format, some of the newer options (Use Canceled Numbers, Output Revision, etc.) were not copied.

MWAutoNumber Release Notes

Behavior Changes (2.0.0)

- The [Formats] ⇔ (AutoNumber) ⇔ “Use Generic File Name” option is now disabled if the format folder option “File Count In Folder and Match AutoNumber” is used. This is because the “File Count In Folder and Match AutoNumber” option requires an AutoNumber be generated in order to generate the folder name.
- Previously, the [Formats] ⇔ (Configurations) ⇔ “Do Not Categorize Brother Configurations” option was only applied if the category fields were aligned fields (within MechWorks PDM’s Configuration options). Now, the [Formats] ⇔ (AutoNumber) ⇔ “Do Not Categorize Brother Configurations” option is applied even if the category fields are not aligned fields within the MechWorks PDM options. The resulting behavior (if this option is activated), is that adding a brother configuration never displays the category wizard, instead having the new configuration inherit its categories from the existing brother records.
- Previously, if a configuration with a non-managed name (as configured using the MechWorks PDM Configuration options) was created, the Format List was displayed, prompting the user to change the name in a way that might be managed. Now, if a configuration with a non-managed name is created, the Format List is not displayed and the configuration is not registered (as it is assumed the configuration is intended to not be managed).
- When saving a Drawing and being prompted for a format, if the Drawing has a component, then the Drawing will inherit the categories even if the option to "Use Categories" is selected.
- Context sensitive Tabs: The tabs in the format options are now "context sensitive" and hide when not applicable. For example:
 - Environments that do not save configurations as distinct records, then the (Configurations) tab is hidden
 - Environments that do not use the DataEntr.lst during a rename, then the (Rename) tab is hidden
 - Environments that use the global drawing options, then the (Drawings) tab is hidden
 - Within formats defined to use the "Replace DWG" option, then most of the tabs are hidden

MWAutoNumber Release Notes

1.0.11

Bug Fixes (1.0.11)

- The **OnAddDocument.lst** and **DataEntr_Generic.lst** scripts were always outputting the first revision in the schema. This was causing the wrong starting revision if the generic documents were being registered as linked to documents already at a different revision level.
- Within environments creating distinct records for configurations, if the MWAutoNumber Format was using the folder option to "Prompt User For Path" and the configuration option "Give Each Configuration the Same ID: ID-Configuration", then when doing a Save As against a model, the FILE_NAME and ID were not set correctly.

1.0.10

Bug Fixes (1.0.10)

- Within environments that converted from DBTools to MWAutoNumber, the option to "Hide Format From User Selection" was not always working.

1.0.9

Enhancements (1.0.9)

- The "**About**" dialog was updated to use more informative naming information.

Bug Fixes (1.0.9)

- When using MechWorks PDM versions older than R16 SP1.8, an error was getting thrown when selecting a format in the format options dialog regarding the MechWorks PDM option to **KEEP_CAD_CONFIGURATION_PROPERTIES_SYNCHRONIZED**.
- DBInventor: The DataEntr.lst was sometimes showing an error about getting the active document's configuration information.

1.0.8

Enhancements (1.0.8)

- When loading the Format List dialog, the performance has been significantly improved within environments with many (several hundred) defined formats.

MWAutoNumber Release Notes

1.0.7

Enhancements (1.0.7)

- The installation dialog has been enhanced to make it clearer between the differences between a “**Client**” vs. a “**Client + Server**” installation.
- The loading performance of the Format List dialog has been slightly improved by not loading the format’s properties until it is selected for the first time.
- When selecting a format within a binder, the selection is now remembered so the binder will be expanded and the same format selected the next time the format list is shown.
- A format can now be selected by double clicking it.
- When selecting a format that allows the user to browse for the file directory, the MWAutoNumber application now remembers the user’s selection. The next time the user selects a format that allows browsing to the directory, the previously selected directory will be the default path.

1.0.6

Bug Fixes (1.0.6)

- Due to a regression added in 1.0.5, the **OnAddDocument.lst** script was crashing within environments with multiple formats in multiple binders.
- The **OnAddDocument.lst** script was not always displaying the formats.

MWAutoNumber Release Notes

1.0.5

Enhancements (1.0.5)

- A new option has been added to always show the format list before the category wizard. When the option is not selected and there are formats with linked categories, then the category wizard is always displayed before the format list (and if the user selects a set of categories linked to a format, then that format is automatically selected). If the option is checked, then the format list is always shown before the category wizard. If the user selects a format with ONE final set of linked categories, then that set of categories will be automatically selected and the category wizard is not shown.
- A new option has been added to optionally output a REVISION value. Previously, the **DataEntr.lst** was automatically outputting the first REVISION value, which was sometimes interfering with environments with customized scripting for outputting the first REVISION value.
- Added an **About** dialog box.
- The last selected format is now automatically selected as the default when showing the format list. This behavior is mode-specific (the remembered last selection when executing a Save-As can be different than the remembered last selection when executing a Rename, for example). If the user has not selected a format yet within their session, then the first format in the list (and not within a Binder) is automatically selected as the default format in the format list.
- If only one non-hidden format exists, it is automatically selected and the format list is not displayed.
- The “Always Use Selected Format” option is now mode-specific. It can be a different format when executing a Save-As vs. executing a Rename, etc.
- The options to show the category wizard or change the format number or description are now ignored when using the Assembly Duplication Wizard to prevent having to constantly interact with MWAutoNumber formats when duplicating large structures.

MWAutoNumber Release Notes

Bug Fixes (1.0.5)

- The default number change type was "Both" when it should be "Description Only".
- The format options were sometimes not reloading correctly when switching between formats.
- The Format Options dialog and Format List dialog were sometimes timing out and crashing when called from the shortcut bar.
- When renaming a file with one or more drawings, the drawing was sometimes not renamed, instead presenting a message that the new file name (which is the old drawing file name) already exists.
- When the format Configuration option to use "the same id" (append the original configuration name to the file's part number, possibly with a prefix or suffix) was checked, this was causing some unexpected results when saving against an existing file. Instead of replacing the original part number with the new part number, it was appending the new part number to the beginning - resulting in very long configuration names if the file was the result of executing many "Save As" commands consecutively.
- If the format list was left open for too long, the DataEntr.lst was crashing. (The scripts were changed to 64 bit to prevent the crash.)
- When using the format option to assign the configuration a unique id, the description was getting output as the new ID and the old ID, instead of just the new ID.
- If the NumberVal for any format was NULL, an error was produced. The NumberVal is now set to 1 if it is NULL.
- When changing some text in any of the format options, the Apply button did not become available until another option was selected.
- The "Always Use Selected Format" option was not working when using the Assembly Duplication Wizard.
- When using the Assembly Duplication Wizard, the format list was sometimes shown for drawings whose IDs should follow the model's.
- When using the Assembly Duplication Wizard, the format list was sometimes displayed an extra time.
- When using the Assembly Duplication Wizard with the Wizard options enabled to inherit some field values (such as categories or descriptions), these values were not being inherited, instead being overwritten by the default values for the MWAutoNumber format.
- The format options would sometimes create an unmanaged configuration, resulting in database records not getting created correctly. For example, an environment could have the MechWorks PDM options set to only create database records for configurations with names that start with a letter. This environment could then also have an MWAutoNumber format with the number format set to a 6-digit number, and the configuration options set to rename each configuration to the number. Saving a configuration with this format could result in changing a managed configuration to an unmanaged configuration (i.e. changing "Default" to "123456"), resulting in unexpected problems with the database record. Now, if a configuration is about to be changed from a managed configuration to an unmanaged configuration, the DataEntr.lst presents the user with an error letting them know the resulting action would create an unmanaged configuration and it cannot continue.

MWAutoNumber Release Notes

- The option to not rename the configuration was not working.
- When changing the configuration prefix option, the new value was not always remembered.
- When changing the configuration prefix option or the configuration suffix option, the preview was not updating.

MWAutoNumber Release Notes

1.0.4

Bug Fixes (1.0.4)

- The option to add the suffix to the second drawing was not always remembered.
- Saving a drawing without a model in it was causing an error about the SQL Server driver having incorrect syntax near “)”. This error was also being caused when using the Assembly Duplication Wizard with models with drawings.
- The option to “Hide Format from User Selection” was not working correctly.
- When using the option to file count in the folder, the counter was not always incrementing correctly. When this happened, the format list displayed would be blank and MechWorks PDM would freeze when displaying the empty list.
- When saving a derived configuration of a weldment part, if the option to only save parent configurations was enabled, users were getting a message box saying “Exiting here”.

1.0.3

Bug Fixes (1.0.3)

- When saving configurations as distinct records, the file name was sometimes not changed.

1.0.2

Enhancements (1.0.2)

- When the “Server” installation is selected, the DataEntr.LIB is now installed if it does not exist. (The DataEntr.LIB is a library file usually installed with the updated versions of MechWorks PDM.)

Bug Fixes (1.0.2)

- When the drawing option to add the suffix to the first drawing was enabled, it was applying the suffix to ONLY the first drawing. Now it is applied STARTING WITH the first drawing (so to all drawings).
- The combo boxes were not compatible with Windows 7 environments, so causing the Format Options dialog to crash in Windows 7 environments.

MWAutoNumber Release Notes

0.0.1

Enhancements (0.0.1)

- Accessing the Format Options or the Format List is now available in the shortcut bar. The Format Options dialog is only available to administrators.
- If a file called DESCRIPTION.LST exists in the LST folder, the dialog box for changing the number/description now loads the list of possible descriptions into a drop-down list.

Bug Fixes (0.0.1)

- When using the Category Wizard, the default description is now driven by the categories selected rather than the part number.
- When loading the Format Options dialog, any formats with the option set to “Replace DWG” were not loaded with that option set correctly.