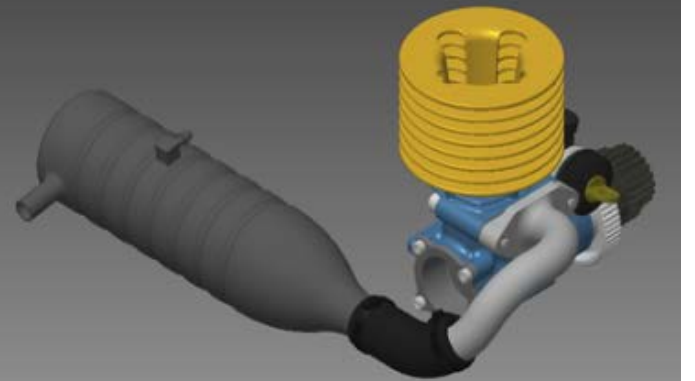
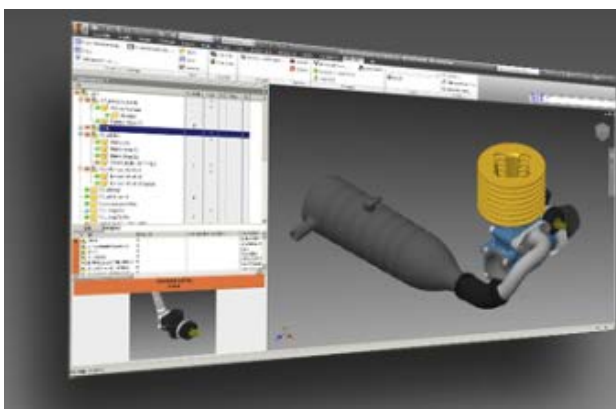
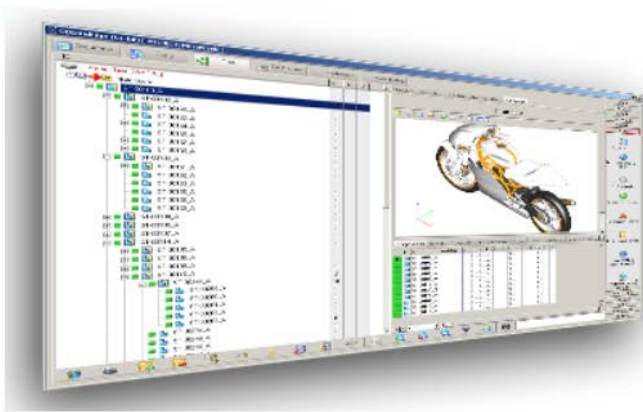


MechWorks PDM AutoNumbering Silent Installation



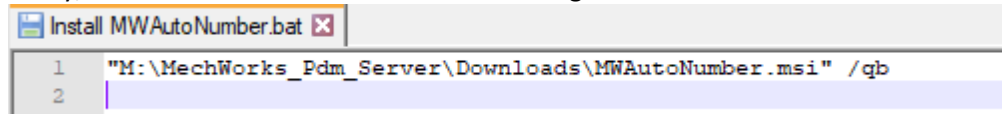
Silent Installations

The MWAutoNumber.msi installer package is a standard Windows Installer package, and so is compatible with all msiexec.exe command line parameters, as documented in the link below:

<https://www.advancedinstaller.com/user-guide/msiexec.html>

Installing the Client Only

To install the client only, the command line should look something like this:

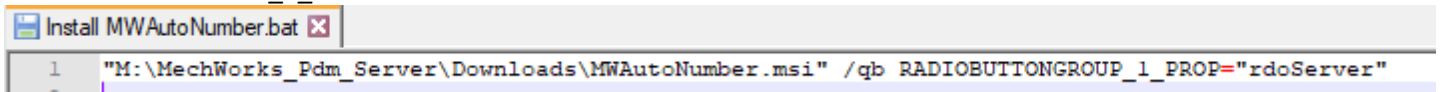


```
1 "M:\MechWorks_Pdm_Server\Downloads\MWAutoNumber.msi" /qb
2
```

- "M:\MechWorks_Pdm_Server\Downloads\MWAutoNumber.msi"
 - The first parameter should be the full path to the .msi installer in quotes.
- /qb
 - The second parameter should be /qb, which tells Windows Installer to install the .msi in quiet (basic) mode

Installing the Client+Server

To install the Client+Server version of MWAutoNumber, the command is the same, except with the added parameter RADIOBUTTONGROUP_1_PROP="rdoServer" at the end:

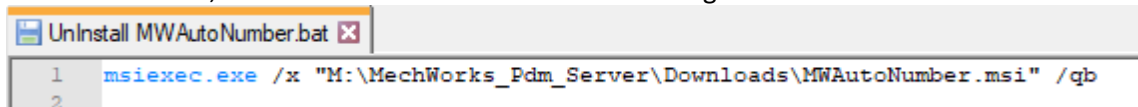


```
1 "M:\MechWorks_Pdm_Server\Downloads\MWAutoNumber.msi" /qb RADIOBUTTONGROUP_1_PROP="rdoServer"
2
```

- "M:\MechWorks_Pdm_Server\Downloads\MWAutoNumber.msi"
 - The first parameter should be the full path to the .msi installer in quotes.
- /qb
 - The second parameter should be /qb, which tells Windows Installer to install the .msi in quiet (basic) mode
- RADIOBUTTONGROUP_1_PROP="rdoServer"
 - This third parameter tells Windows Installer to behave as if the radio button for the "Client+Server" version was selected.

Uninstalling MWAutoNumber

To uninstall MWAutoNumber, the command line should look something like this:



```
1 msiexec.exe /x "M:\MechWorks_Pdm_Server\Downloads\MWAutoNumber.msi" /qb
2
```

- msiexec.exe /x
 - The first parameter should be msiexec.exe /x, which tells Windows Installer to uninstall the .msi package
- "M:\MechWorks_Pdm_Server\Downloads\MWAutoNumber.msi"
 - The second parameter should be the full path to the .msi installer in quotes.
- /qb
 - The third parameter should be /qb, which tells Windows Installer to install the .msi in quiet (basic) mode