



April, 2026

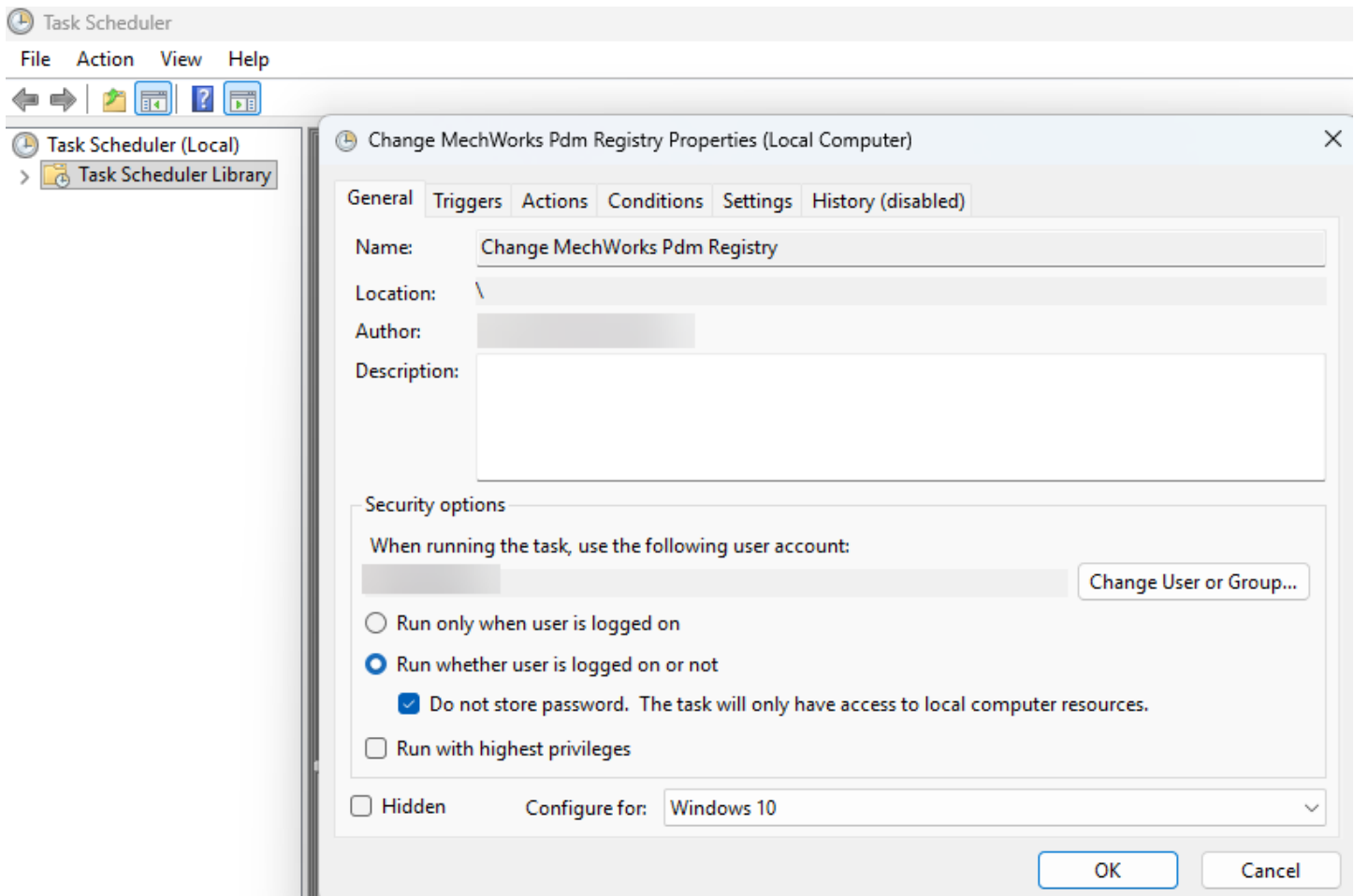
The background of the central text is a faded, light-colored image of a bridge with multiple arches spanning across a body of water. The bridge is rendered in a light blue and grey tone, blending into the white background.

MW Environment Selection Utility What's New Version 4.0.0

With version 4.0.0, the MW Environment Selection Utility has been completely overhauled to achieve the following two goals:

- Removal of the need for a Windows Scheduled Task
- Significantly improved performance

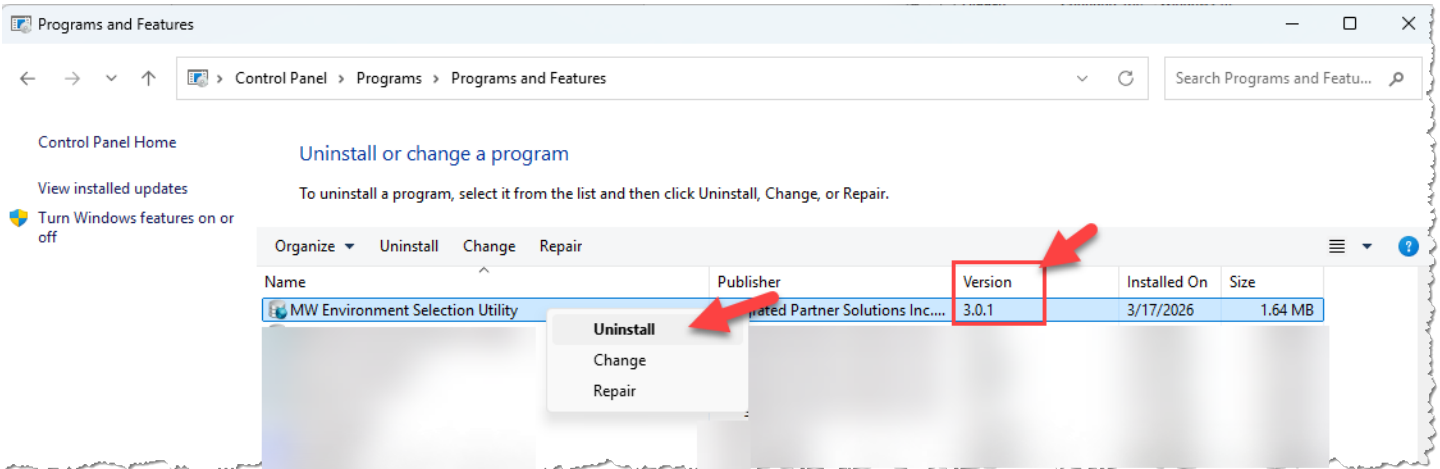
In versions 1.X through 3.X, a Windows Scheduled Task was required to update certain environments:



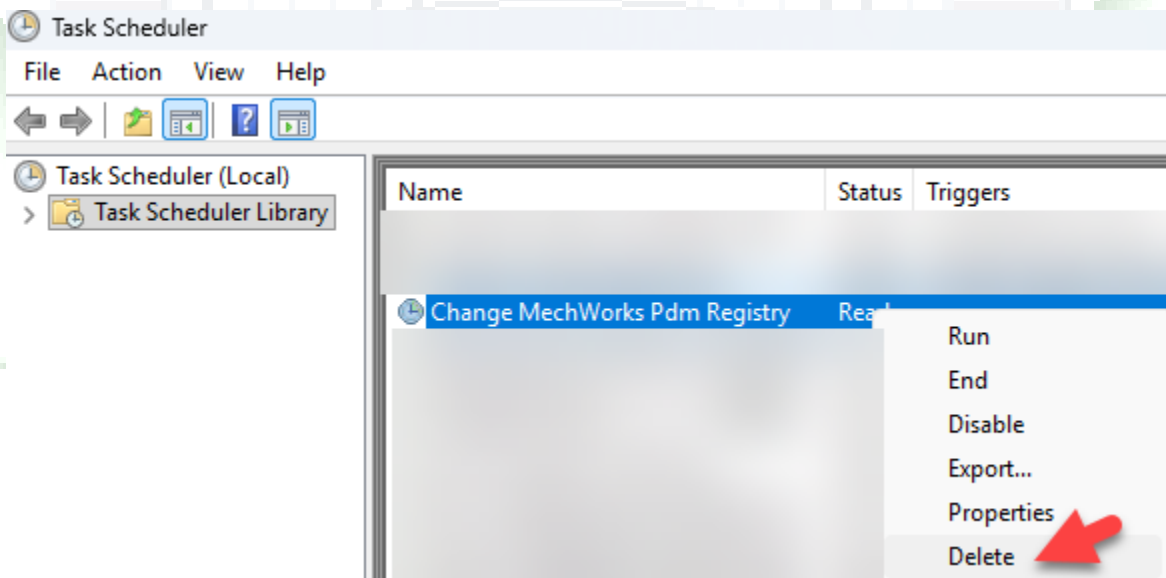
Installing and maintaining this task was cumbersome and difficult. Starting with version 4.0.0, the MW Environment Selection Utility will no longer use a Windows Scheduled Task.

Additionally, the overall performance of version 4.0.0 is significantly improved from previous versions.

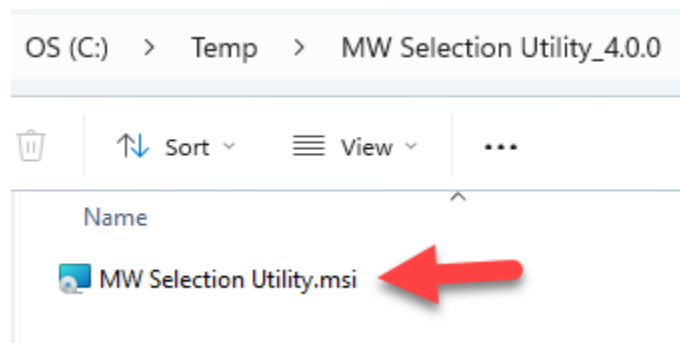
To install version 4.0.0, first uninstall the old version:



Then, delete the Windows Scheduled Task:



Finally, install version 4.0.0 by running the .msi installer:



This will install both the “MW Save Environment” and “MW Change Environment” applications as shortcuts on the user’s desktop:

